



*Sree Guru Foundations Pvt Ltd*  
Engineers, Contractors & Promoters



**SREE GURU VIKAS**  
Premium Lifestyle Apartments

@ **PALLIKARANAI**

**CONTACT:**

**+91 98400 12082 | +91 87544 77330**

[www.sreegurufoundations.com](http://www.sreegurufoundations.com)





## ABOUT US



Sree Guru Foundations was founded in Chennai in 2004 and has since grown to promote more than 240 successful projects ranging from builder floor apartments to commercial spaces.

All through the journey, the guiding principle for the company's growth has been its commitment to the core values of trust, quality, and professionalism. The company also owes a good portion of its success to high customer referral rates and second-time buyers - a testimony for the brand's ethos.

The company strongly orients all aspects of its operation; be it design, material selection, or functionality, around a simple principle - The Customer Always Comes First.

So far, Sree Guru Foundations has promoted more than 55 apartment projects, undertaken nearly 170 residential contract projects, 9 buildings for commercial purposes, and 6 large scale industrial buildings. The company, as a one-off project, has also undertaken works at Southern Railways.



*Sree Guru Foundations Pvt Ltd*  
Engineers, Contractors & Promoters



## BUILDING DREAMS, CRAFTING REALITIES

Pranam! With pleasure we enclose the relevant details of our residential Project '**SREE GURU VIKAS**' located at Plot No. 117&118, 2nd Main Road, Kamakoti Nagar, Pallikaranai, Chennai – 600 100. One of the quite few residential areas in City. The proposed residential complex will have stilt plus five floors with two 3 bedroom flats in each floor and covered car parking in Ground floor. For further details regarding this project please feel free to contact us.

With Regards,  
Director,  
For Sree Guru Foundations Pvt Ltd

### AMENITIES



Solar Power For  
Common Area



Smart Lock for  
Main Door



Video door Phone



Generator for  
Common Power



Lift Till  
Terrace



EV Charging  
Point



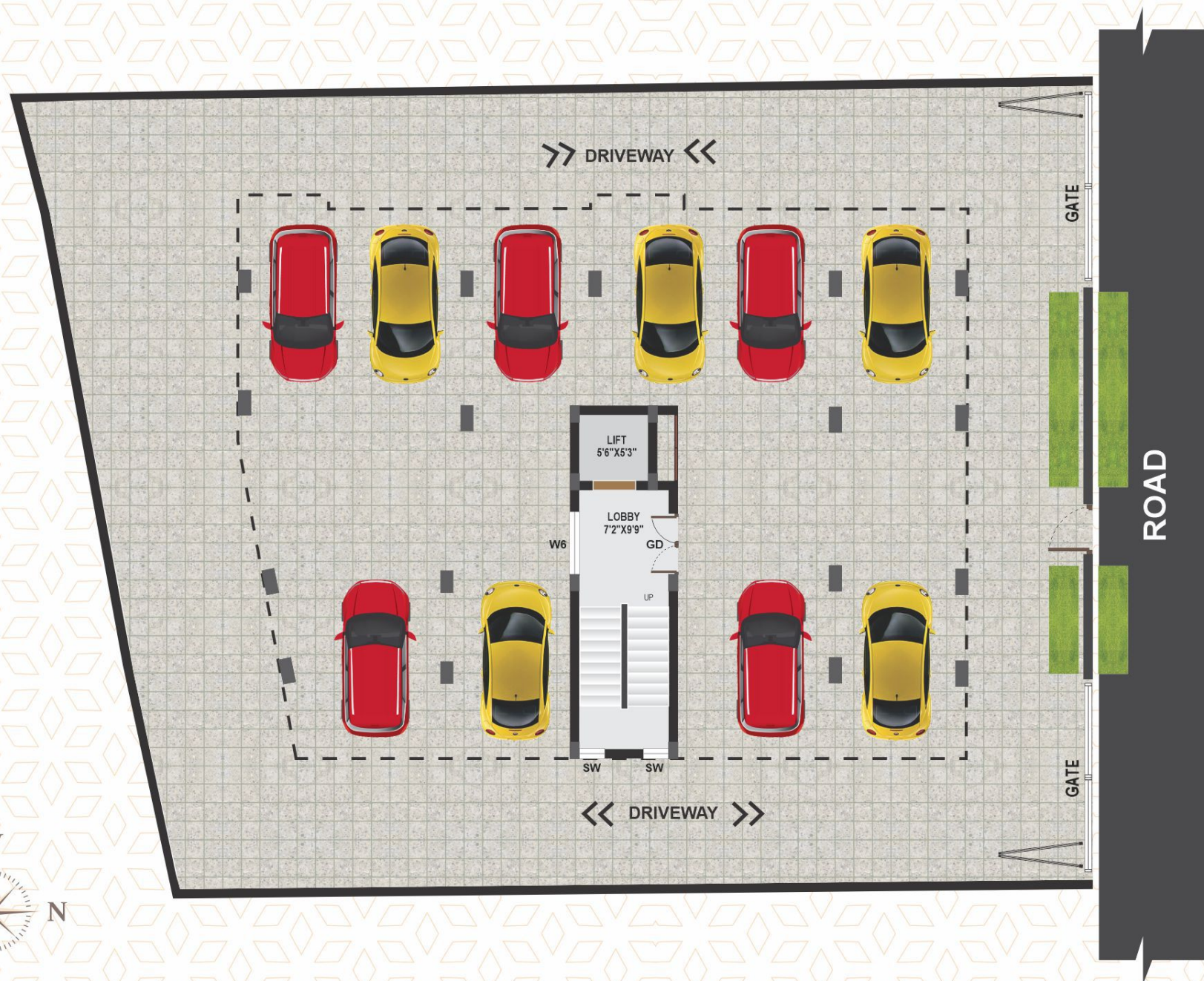
Automatic Water  
Controller



# SREE GURU VIKAS

Premium Lifestyle Apartments

## CAR PARKING





# TYPICAL FLOOR PLAN



SREE GURU VIKAS

Premium Lifestyle Apartments



UNIT	CARPET AREA	PLINTH AREA	COMMON AREA	SALEABLE AREA	UDS
A	1016	1170	234	1404	504
B	1006	1174	235	1409	506



# SREE GURU VIKAS

Premium Lifestyle Apartments

## UNIT PLAN - A



# A



UNIT	CARPET AREA	PLINTH AREA	COMMON AREA	SALEABLE AREA	UDS
A	1016	1170	234	1404	504



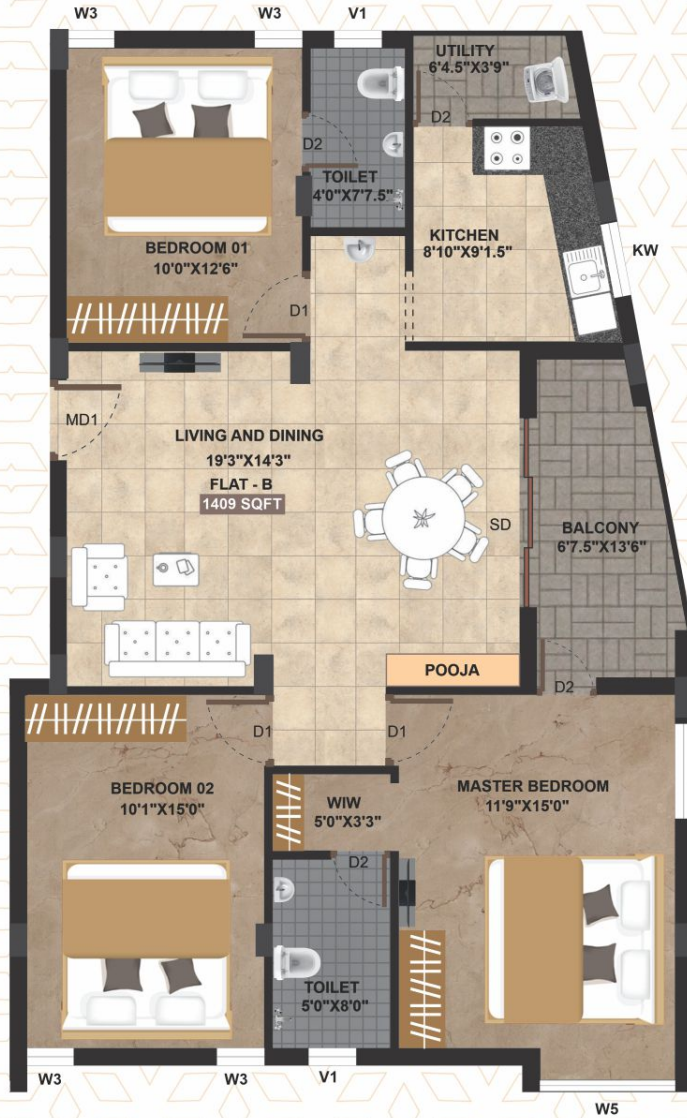
## UNIT PLAN - B



**SREE GURU VIKAS**

Premium Lifestyle Apartments

B



UNIT	CARPET AREA	PLINTH AREA	COMMON AREA	SALEABLE AREA	UDS
B	1006	1174	235	1409	506



## SPECIFICATION



**SREE GURU VIKAS**

Premium Lifestyle Apartments

## FOUNDATION

Isolated column footings designed for seismic zone, Pre-construction anti-termite soil treatment for basement.

## SUPER STRUCTURE

R.C.C framed structure designed for seismic zone, 9" brickwork for exterior walls, 4.5" brickwork for interior walls with cement plastering.

## FLOORING

Vitrified tile (2' x 4') flooring for covering the carpet area and antiskid tile (1'X1') flooring for covering the balcony and service area.



## KITCHEN

Black galaxy granite top with 1mm stainless steel sink, 2ft tiled wall.



## JOINERIES

Panelled teak wood main door with brass accessories and Smart lock for Main Door at entrance, Moulded panel doors with mortise lock & SS fittings for bedrooms, UPVC windows with plain glass and grill.





## TOILET

Parry ware wall mounted cascade coupled closet & wash basin (white colour), Jaguar Florentine C.P fittings, 7ft tiled wall, PVC pipes for outlet sewage lines, CPVC pipes for concealed water line & geyser provision, WPC flush doors, Antiskid floor tiles, Ventilator with exhaust fan provision, louvers and MS grills.



## ELECTRICAL

3 phase electricity supply, ISI make modular switches and wires, Concealed FRLS copper wiring, Distribution board with RCCB, MCBs and phase changer, A/C points in bedrooms and living, TV & Telephone points in living and master bed room.



## GENERAL

6 passenger stainless steel (SS) made automatic lift, Overhead tanks for well and sump water, Common lights in stilt, headroom and staircase with three phase common meter, Providing power backup with generator for common area and lift, and minimum light, fan points to all flats. Security camera, video door phone for staircase Entrance. Compound wall with grill gate, SS baluster and SS railing for staircase, Staircase steps with granite finish.



## PAINTING

Asian emulsion paint over Birla wall care putty for inner walls, Asian APEX emulsion paint over one coat of primer for exterior walls, Enamel paint for joineries and melamine varnish for main door.





## ON GOING PROJECTS



**SREE GURU SUKRITI**  
@ Gowrivakkam, Chennai



**SREE GURU PRAGATHI**  
@ Thiruvengada Nagar, Ambattur



**SREE GURU DARSHANA**  
@ Thirumullaivoyal, Chennai

## COMPLETED PROJECTS



**SREE GURU PRAKRITI**  
@ IIT Colony, Pallikaranai



**SREE GURU SHREYAS**  
@ VGP Shanthi Nagar, Pallikaranai



**SREE GURU ATULYA**  
@ Raju Nagar, Thoraipakkam



**SREE GURU PRITHVI**  
@ J&H Block, Anna Nagar, Chennai



**SREE GURU CHAITANYA**  
@ Chennai New City, Ayanambakkam



**SREE GURU SURAKSHA**  
@ Thiruvengada Nagar, Ambattur

# KEYPLAN

Not to Scale



## Disclaimer:

- The information contained herein subject to change as may be required by the authorities and can't form an offer or contract. While every resonable care has been taken in providing the information. Sree Guru Foundations Pvt Ltd or their agents can't be held responsible for any inaccuracies. Sree Guru Foundations Pvt Ltd reserves the right to make alternations and amendments as may be necessitated from the time to time without prior notice.
- The Illustration is only for Indication Purpose



*Sree Guru Foundations Pvt Ltd*  
Engineers, Contractors & Promoters

Plot No: 1961-A, J-Block, 3rd Street, Anna Nagar (West), Chennai - 600 040

Email: [info@sreegurufoundations.com](mailto:info@sreegurufoundations.com) | Web: [www.sreegurufoundations.com](http://www.sreegurufoundations.com)

@ sreegurufoundations | f sreegurufoundations

**Your Dream Home is Just a Call Away !**

---

Phone: +91-44-2616 0792, Mobile: 98400 12082 | 87544 24251 | 87544 77330

---